

Sunday,
26 Nov 2017,
17.00 UTC+7

MT. AGUNG ERUPTION, BALI, INDONESIA | FLASH UPDATE #2

adinet.ahacentre.org/reports/view/970



ONE ASEAN ONE RESPONSE



ONE ASEAN
ONE RESPONSE
ASEAN Coordinating Centre
for Humanitarian Assistance
on disaster management

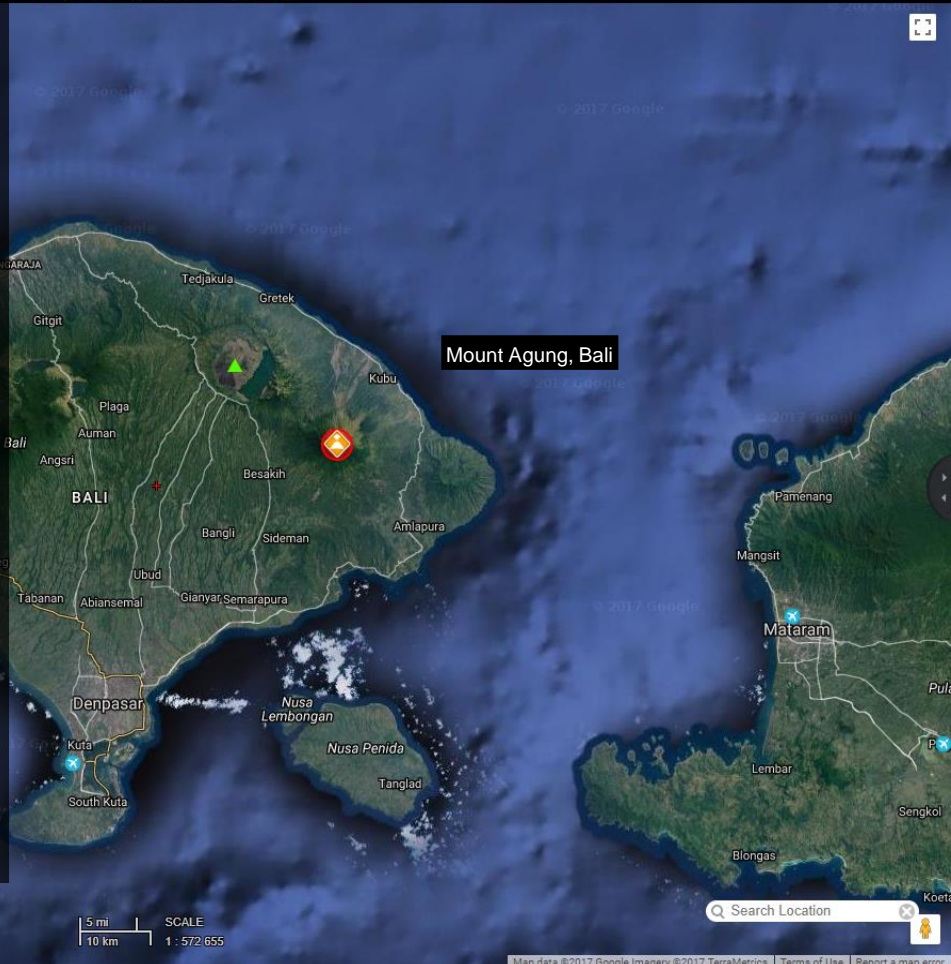
DMRS v5.3.3

Powered by DisasterAWARE

UTC	YANGON	BANGKOK	SINGAPORE	TOKYO	SYDNEY
08:45	08:45	15:45	16:45	17:45	19:45
NOV 26, 2017	NOV 26, 2017	NOV 26, 2017	NOV 26, 2017	NOV 26, 2017	NOV 26, 2017

Summary

- ✓ In the past 24 hours, Mt. Agung, in Bali, Indonesia has erupted twice with the following [volcanic activity summary](#):
 - ✓ First eruption: 25 Nov 2017, 17.30 (UTC+8), releasing **1,500 m of ash cloud**.
 - ✓ Second eruption: 26 Nov 2017, 05.45 (UTC +8), releasing **3,000 m of ash cloud**.
 - ✓ Type of eruption: Phreatic eruption
 - ✓ As of 26 Nov 2017, 05.55 (UTC+8), eruption and ash emission is continuing, with ash cloud moving east-southeast.
 - ✓ Best estimate of ash-cloud top is around 19654 feet (6142 m) above sea level, may be higher than observation,
 - ✓ PVMBG maintains alert level 3 (from 4 levels), followed by evacuation order by the BNPB and local BPBDs.
- ✓ AHA Centre provides **top 3 priority sectoral updates** at the moment.
- ✓ AHA Centre is closely monitoring the situation, maintaining close coordination with the BNPB. Next update will be provided, once additional information is available.



1 Impact on Aviation & Tourism

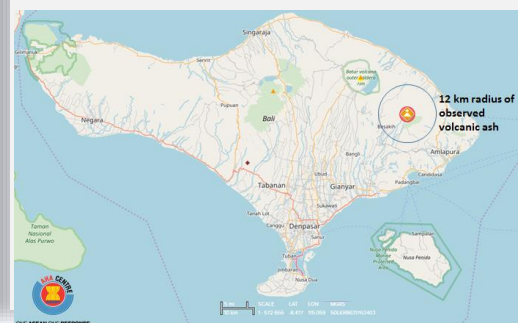
- ✓ As of 26 Nov 2017, 05.50 (UTC+7), [Volcano Observatory Notice for Aviation \(VONA\) for Mt. Agung turns to Red](#).
- ✓ By 26 Nov 2017, news agencies reported **28 flights (domestic & international) have been delayed**. Ngurah Rai International Airport (DPS) is open and safe as located more than 70 km from Mt. Agung.
- ✓ [Bali Province Government](#) stated tourism sector has not badly affected by Mt. Agung activities, and is safe for tourism. Five million tourists has visited Bali as of October 2017 (out of 5.5 million tourists in the annual target).
- ✓ Use **#agung** and **#gunungagung** for social media monitoring and hash tagging.

2 Evacuation of Residents

- ✓ [PVMBG & BNPB](#) increased the mandatory **Exclusion Zone from 6 to 7.5 km radius** effective from 25 Nov 2017.
- ✓ [BNPB](#) reported 25,016 evacuees in 224 evacuation sites, as of 25 Nov 2017.
- ✓ There is no official revision on Mt. Agung Hazard Map, on projected lahar flow, that can be accessed [here](#).
- ✓ BNPB's live map of public facilities, evacuation centers and signage of Mt. Agung can be accessed [here](#).
- ✓ Telkomsel provides CCTV live-streaming from Karangasem Regency for monitoring Mt. Agung, which is publicly available and can be accessed [here](#).

3 Respiratory health & ailments

- ✓ Volcanic ash has been observed traveling as far as 12 km from Mt. Agung, affected residents are advised to use mask for preventing respiratory illness.
- ✓ **N95 mask** is recommended for individuals with existing respiratory ailments/conditions.
- ✓ Locations of hospitals and public health facilities nearby Mt. Agung can be accessed [here](#).



DATA SOURCE

AHA Centre Disaster Monitoring & Response System (DMRS); Pacific Disaster Center (PDC Global); Indonesian National Disaster Management Authority (BNPB); Indonesian Center for Volcanology & Geological Hazard Mitigation, Ministry of Energy & Mineral Resources (PVMBG / CVGHM); Telkomsel; various news agencies.

DISCLAIMER

The AHA Centre was established in November 2011 by the Association of South East Asian National (ASEAN) and ASEAN member states to facilitate cooperation and coordination among the Parties, relevant agencies of the United Nations and international organisations in disaster

management and humanitarian assistance.

The use of boundaries, geographic names, related information and potential considerations for response are for reference, not warranted to be error free or implying official endorsement from ASEAN Member States.

© 2017 AHA Centre. All rights reserved. You are receiving this email because you are registered in our distribution list.

Our mailing address is: AHA Centre, GRAHA BNPB 13th Floor, Jl. Raya Pramuka Kav. 38, Jakarta 13120 Indonesia