

2 November 2017,
17:00 UTC+7,
(under monitoring)

AHA Centre FLASH UPDATE #1

Tropical Storm Damrey (28)



ONE ASEAN ONE RESPONSE

AHA CENTRE
ASEAN Coordinating Centre
for Humanitarian Assistance
on disaster management

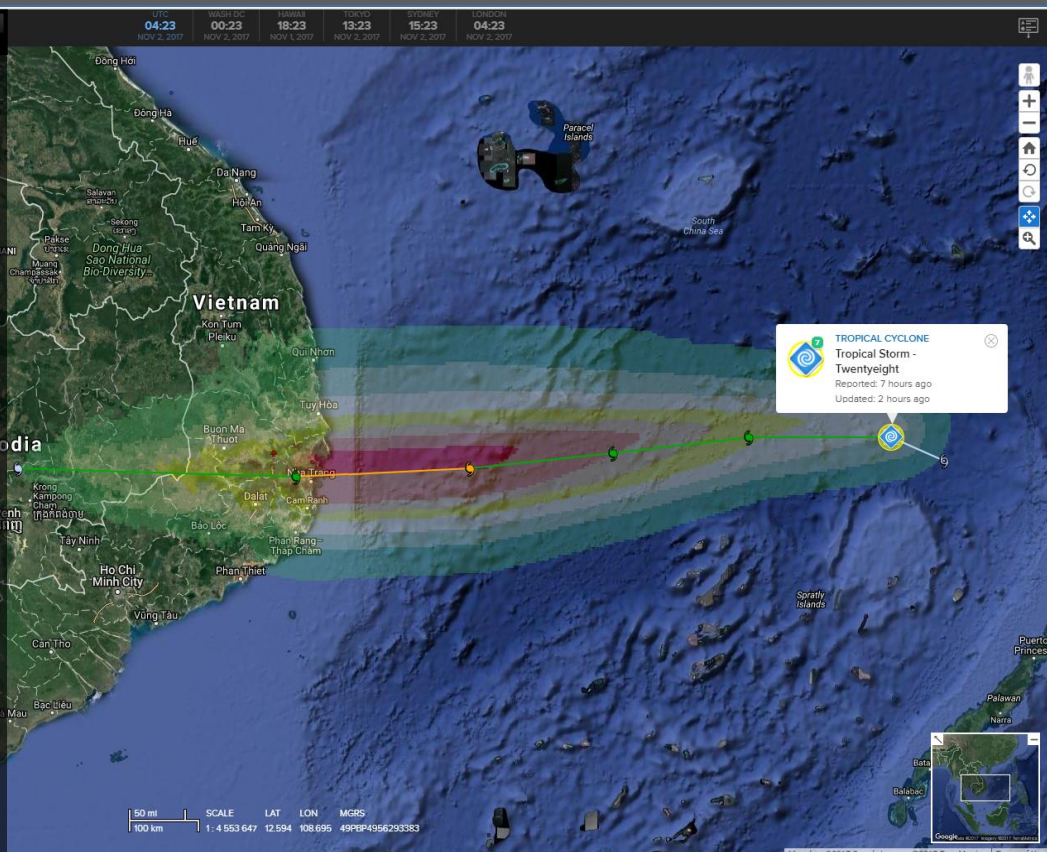
DMRS v5.3.3
Powered by DisasterAWARE

SUMMARY

The AHA Centre Disaster Monitoring & Response System (DMRS) increased the alert level to **"WATCH"** for Tropical Storm Twenty-eight (TS 28), considering the following parameters:

- TS 28 maximum wind speed is estimated at 139 km/h
- Safir-Simpson Category: Category 1
- The total rainfall accumulation associated to the storm may bring extreme rainfall
- GDACS estimated a maximum of 0.7 m storm surge may be observed in Dong Hai at 03 November 2017 23:00 LT.
- Population affected by Category 1 Tropical Storm (120 km/h wind speeds of higher) is 1.182 million.
- The affected population is classified as having high risk, based on ASEAN Multi Hazard Risk Index.

AHA Centre will continue its monitoring. An update will be issued based on the development of the situation.



AHA Centre insight for Tropical Storm 28 (Damrey)

Countries at Risk

Vietnam (VN), landfall est. 4 Nov 2017

Cambodia (KH), landfall est. 5 Nov 2017

Provinces at Risk

Province	Population
Khanh Hoa (VN)	930,000 people
Ninh Thuan (VN)	1.3 million people
Dac Lac (VN)	1.1 million people
Lam Dong (VN)	750,000 people

Key Cities at Risk

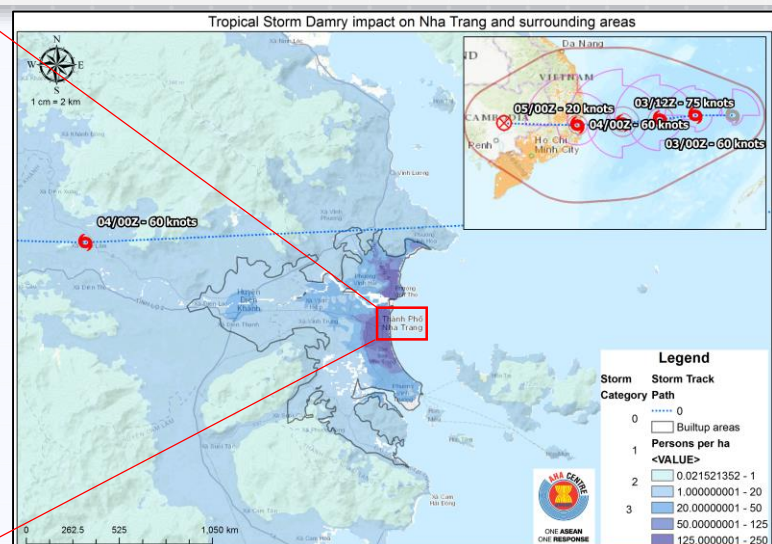
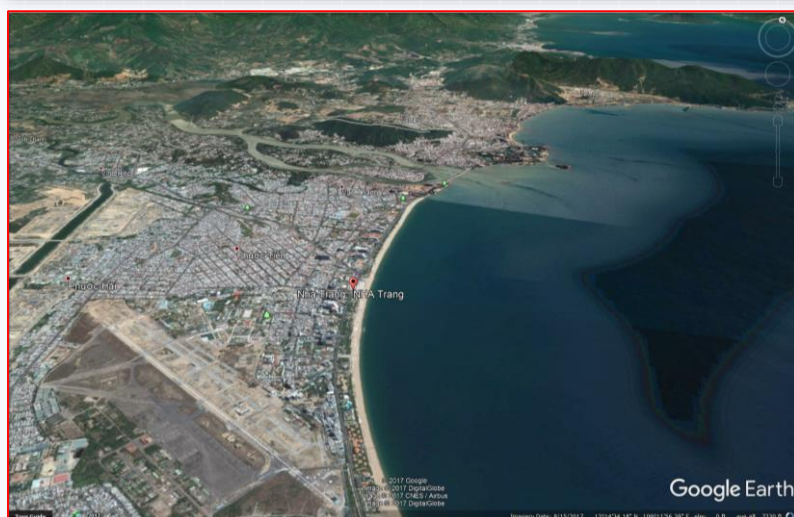
Cities	Province	Population
Nha Trang (VN)	Khanh Hoa	270,000
Cam Ranh (VN)	Ninh Thuan	140,000

Key Infrastructures at Risk

- ✓ Nha Trang Int'l Airport / NHA (VN)
- ✓ Cam Ranh Int'l Airport / CXR (VN)
- ✓ Van Phong Port (VN)
- ✓ Nha Trang Port (VN)

Characteristics of Risk & Considerations for Preparedness & Response

- ✓ Tourism, trade and services activities in urban areas of Nha Trang city & Cham Ranh city (VN), lies above flat terrain
- ✓ Highly dense residential areas in Xom Bong and Con Ngoc Thao (VN), at risk of storm surge and flood
- ✓ Highly dense residential areas in Vinh Hai, Vin Phuoc and Vinh Hoa (VN), at risk of landslide
- ✓ Potential flood and landslide in rural areas of all provinces at risk (both VN and KH), endangering agricultural activities



DATA SOURCE

AHA Centre DMRS; Pacific Disaster Center (PDC Global); Central Steering Committee for Natural Disaster Prevention and Control; Global Disaster Alert and Coordination System (GDACS); Joint Typhoon Warning Center (JTWC); Global Administrative Area; Google Earth; WorldPop

DISCLAIMER

The AHA Centre was established in November 2011 by the Association of South East Asian National (ASEAN) and ASEAN member states to facilitate cooperation and coordination among the Parties, relevant agencies of the United Nations and international organisations in disaster management and humanitarian assistance.

The use of boundaries, geographic names, related information and potential considerations for response are for reference, not warranted to be error free or implying official endorsement from ASEAN Member States.

© 2017 AHA Centre.
All rights reserved.
You are receiving this email because you are registered in our distribution list.

Our mailing address is:
AHA Centre,
GRAHA BNPB 13th Floor, JL.
Raya Pramuka Kav. 38,
Jakarta 13120 Indonesia