

Beneficial Management Practices Environmental Cost-Share Opportunities for Ontario Farmers

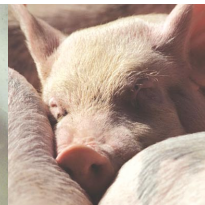
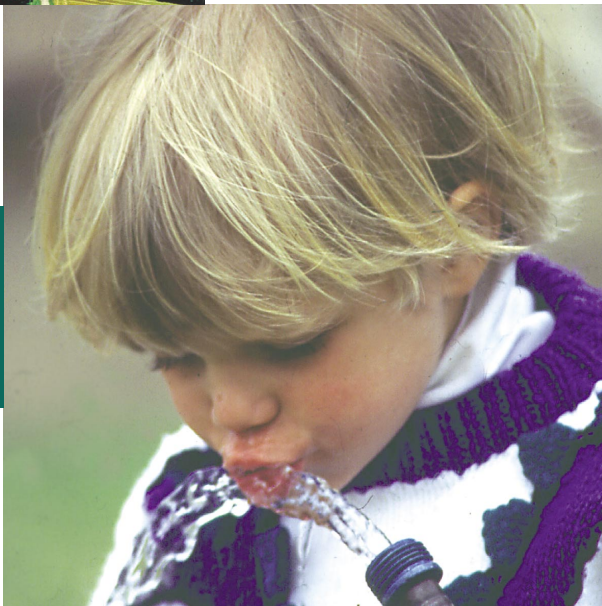
Available through
the Canada-Ontario Environmental Farm Plan

Eligible producers may choose to participate in one or all of the federally funded environmental cost-share programs*. This brochure outlines the general categories of eligible projects, the cost share available, and the funding caps in each category. Information on program eligibility and the application process is also included.



- Canada-Ontario Farm Stewardship Program (COFSP)
- Greencover Canada (GC)
- Canada-Ontario Water Supply Expansion Program (COWSEP)

*Maximum Federal contributions per legal farm entity apply.



Delivered by
Ontario Soil and Crop
Improvement Association
(OSCIA)

April, 2005 - March 31, 2008

Category Code	Beneficial Management Practice Category	Practice Code	Type of Practice	Cost Share	Funding Caps	Program
01	Improved Manure Storage and Handling	0101	increased storage to meet winter spreading restrictions (including satellite storage)	30%	\$30,000	COFSP
		0102	improved features to prevent risks of water contamination (leaks, spills)			
		0103	slurry storage covers to reduce odours and GHG emissions and liquid volume			
		0104	containment systems for solid manure (includes covers)			
		0105	assessment and monitoring of existing manure storage infrastructure			
		0106	engineering design work			
02	Manure Treatment	0201	dewatering systems, nutrient recovery systems	30%	\$30,000	COFSP
		0202	composting of manure			
		0203	anaerobic digesters			
		0204	engineering design work			
03	Manure Land Application	0301	specialized modifications to equipment for improved manure application	30%	\$10,000	COFSP
04	In Barn Improvements	0401	more efficient livestock watering devices and cleanout systems to reduce water use and decrease manure volumes	30%	\$20,000	COFSP
		0402	engineering design work			
05	Farmyard and Horticultural Facilities Runoff Control	0501	upstream diversion around existing farmyards, existing greenhouse and container nursery operations; includes downstream protection (e.g. catch basins, storage for runoff, constructed wetlands)	50%	\$20,000	COFSP
		0502	construction of impermeable base and roof for minimizing runoff from livestock pen areas and confinement areas			
		0503	engineering design work			
06	Relocation of Livestock Confinement and Horticultural Facilities from Riparian Areas	0601	relocation of livestock facilities such as barns, corrals, paddocks and wintering sites away from riparian and other very environmentally sensitive areas	50%	\$30,000	COFSP
		0602	relocation of horticultural facilities such as greenhouses and container nurseries from riparian and other very environmentally sensitive areas			
		0603	engineering design work			
07	Wintering Site Pasture Management	0701	shelterbelt establishment	50%	\$15,000	COFSP
		0702	portable shelters and windbreaks			
		0703	alternative watering systems (e.g. solar, wind, grid lines, waterline from well)			
		0704	field access improvements: alleyway/access lane upgrades			
		0705	fence modifications			
08	Product & Waste Management	0801	improved on-farm storage and handling of agricultural products (e.g. fertilizer, petroleum products, and pesticides)	30%	\$15,000	COFSP
		0802	improved on-farm storage, handling, and disposal of agricultural waste (e.g. livestock mortalities, fruit and vegetable cull piles, wood waste)			
		0803	composting of agricultural waste (e.g. fruit, vegetable, wood, straw residue, dead livestock)			
		0804	engineering design work			
09	Water Well Management	0901	sealing and capping old water wells	50%	\$6,000	COFSP
		0902	protecting existing water wells from surface contamination			

Category Code	Beneficial Management Practice Category	Practice Code	Type of Practice	Cost Share	Funding Caps	Program
10	Riparian Area Management	1001	alternative watering systems to manage livestock: gravity fed, solar, wind or grid power, pump and waterline systems	50%	\$20,000	GC
		1002	buffer establishment: forages, shrubs, trees; includes planting and weed control; tile effluent treatment systems			
		1003	fencing to manage grazing and improve riparian condition/function			
		1004	native rangeland restoration or establishment. Planting native species of forages, shrubs, and trees			
		1005	grazing management in surrounding uplands: alternative watering systems and cross fencing			
		1006	improved stream crossings for livestock or equipment			
11	Erosion Control Structures (Riparian)	1101	constructed works in riparian areas: contour terraces, gully stabilization, bank stabilization, drop inlets, enhanced infiltration systems, in-channel control, and water and sediment control basins (WASCoBs)	50%	\$20,000	GC
		1102	engineering design work			
12	Erosion Control Structures (Non Riparian)	1201	constructed works in non riparian areas: contour terraces, gully stabilization, drop inlet systems and enhanced infiltration systems, WASCoBs and constructed wind screens	50%	\$20,000	COFSP
		1202	engineering design work			
13	Land Management for Soils at Risk	1301	forage or annual barrier establishment for soils at risk (e.g. strip cropping, grassed waterways, perennial forages on severely erodible or saline soils)	50%	\$5,000	COFSP
		1302	straw mulching to assist in permanent forage establishment			
		1303	grazing management in critical erosion areas not associated with riparian zones: alternative watering systems, cross fencing			
14	Improved Cropping Systems	1401	equipment modification on: pre-seeding implements for restricted zone tillage for row crops, seeding and post-seeding implements for low disturbance placement of seed and fertilizer	30%	\$15,000	COFSP
		1402	chaff collectors and chaff spreaders installed onto combines			
		1403	precision farming applications: GPS information collection, GPS guidance, manual and variable rate controllers for fertilizer application			
15	Cover Crops	1501	establishment of non-harvested, non-grazed cover crops	30%	\$5,000	COFSP
		1502	equipment modification for inter-row seeding of cover crops (e.g. relay crops)			
16	Improved Pest Management	1601	equipment modification for improved application	30%	\$5,000	COFSP
		1602	information collection and monitoring			
		1603	biological control agents			
		1604	cultural control practices			
		1605	mobile water tanks for sprayer filling			
17	Nutrient Recovery from Waste Water	1701	recycling of wastewater streams from milk houses, fruit and vegetable washing facilities, and greenhouses to recover nutrients	30%	\$20,000	COFSP
		1702	engineering design work			
18	Irrigation Management	1801	irrigation equipment modification/improvement to increase water efficiency or nutrient use efficiency	30%	\$10,000	COFSP
		1802	equipment to prevent backflow of altered irrigation water into water sources			
		1803	improved infiltration galleries and irrigation intake systems			

Category Code	Beneficial Management Practice Category	Practice Code	Type of Practice	Cost Share	Funding Caps	Program
19	Shelterbelt Establishment	1901	establishment of shelterbelts/windbreaks for farmyard, field, livestock facilities, snowtrap and wildlife habitat enhancement	50%	\$10,000	GC
		1902	tree materials required for shelterbelt/windbreak establishment			
20	Invasive Alien Plant Species Control	2001	integrated approaches (cultural, mechanical, and biological) for control of invasive and alien plant species (e.g. leafy spurge, purple loosestrife, scentless chamomile)	50%	\$5,000	COFSP
21	Enhancing Wildlife Habitat & Biodiversity	2101	buffer strips: native vegetation	50%	\$10,000	COFSP
		2102	alternative watering systems			
		2103	improved grazing systems: cross fencing, restriction of livestock from woodlands			
		2104	wildlife shelterbelt establishment			
		2105	improved stream crossings			
		2106	hayland management to enhance wildlife survival			
		2107	wetland restoration			
22	Species at Risk	2201	alternative watering systems	50%	\$10,000	COFSP
		2202	improved grazing systems: cross fencing			
		2203	plant species establishment			
		2204	infrastructure development and relocation			
23	Preventing Wildlife Damage	2301	forage buffer strips	30%	\$10,000	COFSP
		2302	fencing or netting to protect: stored feed, concentrated livestock, high value crops, drip irrigation systems, and other agricultural activities			
		2303	scaring and repellent systems and devices			
24	Nutrient Management Planning	2401	consultative services to develop nutrient management plans; planning and decision support tools	50%	\$4,000	COFSP
25	Integrated Pest Management Planning	2501	consultative services to develop integrated pest management plans; planning and decision support tools	50%	\$2,000	COFSP
26	Grazing Management Planning	2601	consultative services to develop range and grazing management plans; planning and decision support tools	50%	\$2,000	GC
27	Soil Erosion & Salinity Control Planning	2701	consultative services to develop soil erosion and salinity control plans; planning and decision support tools	50%	\$2,000	COFSP
28	Biodiversity Enhancement Planning	2801	consultative services to plan habitat enhancement, wetland restoration, stewardship for species at risk and/or wildlife damage prevention within agricultural land base; planning and decision support tools	50%	\$2,000	COFSP
29	Irrigation Management Planning	2901	consultative services for planning improved water use efficiency and reduced environmental risk of existing irrigation systems; planning and decision support tools	50%	\$2,000	COFSP
30	Riparian Health Assessment	3001	consultative services for assessing riparian health; planning and decision support tools	50%	\$2,000	GC
31	New Water Wells for Agricultural Purposes	3101	professional services and materials associated with development of a new water well	33%	\$5,000	COWSEP
		3102	dip tubes inserted below the well cap to allow easier monitoring of water levels			
		3103	deepening an existing well to obtain more secure water supply			
		3104	cisterns to supply water for non-potable agricultural uses from low-flowing water wells			
		3105	solar or wind power supply for remote livestock watering systems			

Category Code	Beneficial Management Practice Category	Practice Code	Type of Practice	Cost Share	Funding Caps	Program
32	Ponds for Storing Water for Agricultural Purposes	3201	all construction costs and professional services associated with a new reservoir (pond)	33%	\$5,000	COWSEP
		3202	expansion of an existing reservoir			
		3203	water pumping and fencing systems to keep livestock out of new or existing reservoirs			
		3204	reservoir aeration systems (wind or electric) on new or existing reservoirs for agricultural purposes			
		3205	liner for reservoir			
		3206	all intake works for new and existing reservoirs			
		3207	solar or wind power supply for remote livestock watering systems			
33	Spring and Sand Point Development for Agricultural Purposes	3301	material and construction costs for spring developments for non-potable agricultural use	33%	\$5,000	COWSEP
		3302	measures to protect the supply, including fencing and landscaping for surface runoff control			
34	Water Supply to Farm for Agricultural Use	3401	delivery systems that bring water from storage, licenced intake, or from well located off farm, to farm property line	33%	\$5,000	COWSEP
		3402	conversion of conveyance ditches to pipeline or lining of ditches, to farm property line			
35	Farm Water Treatment Equipment for Agricultural Use	3501	cost of water treatment facility for activities which require potable water (e.g. crop washing facilities, milking centre, greenhouse, livestock)	33%	\$5,000	COWSEP
		3502	water treatment for irrigation systems to meet provincial irrigation water quality guidelines			
		3503	water treatment facility to remove iron or other fouling agents which incapacitate supply infrastructure			
		3504	cost of the treatment unit			
36	Water Supply Expansion Planning	3601	consultative services to prepare hydrogeological/hydrological survey, reports or conduct investigations	33%	\$5,000	COWSEP

The maximum contribution per legal farm entity for Canada-Ontario Farm Stewardship Program (COFSP) and Greencover Canada (GC) combined is up to \$30,000 (the maximum contribution from Greencover Canada alone is up to \$20,000). The maximum contribution for the Canada-Ontario Water Supply Expansion Program (COWSEP) may be up to an additional \$15,000.

Ontario producers with an Environmental Farm Plan (EFP) 'deemed appropriate' through peer review are eligible to apply for cost-share incentives through the Canada-Ontario Farm Stewardship Program, Greencover Canada, and the Canada-Ontario Water Supply Expansion Program to implement actions identified in their farm plans. Additional eligibility criteria will apply.

Existing First and Second Edition EFP 'deemed appropriate' action plans will be honoured until March 31, 2006. All cost-share applications received after March 31, 2006 will require a Third Edition EFP 'deemed appropriate' prior to making a submission.

For producers who had an EFP deemed appropriate between 1993 and April, 2004, retroactive funding may be available for eligible projects in COFSP and Greencover Canada that were initiated after April 1, 2004. Retroactive funding for COWSEP is effective for projects initiated after April 8, 2005.

This brochure lists the Beneficial Management Practices (BMPs) eligible for funding in Ontario. Caps will apply to individual federal programs and to project categories. For more details, check project eligibility guidelines for the specific programs.

Funds will be available until the end of the program or until they are completely allocated, whichever occurs first.

Application Process:

1. Complete an EFP and submit it for peer review:

Complete a Canada-Ontario Environmental Farm Plan and have it deemed appropriate through peer review.

2. Forward an application:

Complete a BMP Project Proposal Application form and submit it to the local OSCIA Program Representative. A separate application must be submitted for each project. The OSCIA Program Representative will review the application for completeness, and then forward it to the OSCIA Guelph office .

3. Obtain 'conditional approval':

Notification of 'conditional approval' of funding will be provided in writing to the applicant by OSCIA Guelph, and may include a request for further information about the project. The applicant is responsible for obtaining all necessary permits relating to the specific project and for providing assurances as required by the OSCIA.

4. Receive 'final approval' for the proposed project:

Once the applicant has provided all the requested assurances to OSCIA, a final eligibility screening is conducted. If successful, the applicant will receive from OSCIA Guelph a 'project approved for completion' letter for the project proposed. A claim form will be sent to the local OSCIA Program Representative. The applicant has up to 15 months from this point (or the end of the program - whichever comes first) to complete the project and have the final inspection conducted.

5. Arrange final inspection and submit the claim form for payment:

Complete the approved project, pay all invoices, and contact the local OSCIA Program Representative to arrange a final project inspection. At this time, the OSCIA Program Representative will verify completion, collect copies of all invoices with proof of payment, and sign off on the Claim Form. The completed Claim Form and copies of all invoices will be submitted by the Program Representative to OSCIA Guelph for processing.

Contact:

Ontario Soil and Crop Improvement Association

1 Stone Road West,

Guelph, Ontario

N1G 4Y2

1-800-265-9751

www.ontariosoilcrop.org

OR Your Local OSCIA Program Representative

